

# La Crosse Wisconsin Voter

No. 112

League of Women Voters of the La Crosse Area Newsletter

April 2011



## THE PRESIDENT'S PODIUM



February and March has brought a complex series of shocks to the Wisconsin political scene. It seems difficult to weigh the issues and find reliable information. The Wisconsin budget has much in it that impacts policies and impacts areas League has studied. It will be imperative that people study that document and be vigilant. As a young college student, I was asked if progress were inevitable. It was a fresh thought at the time. Now I know that the professor was challenging us and warning us. Change is inevitable, and change isn't easy for many of us. And it isn't always progress, either.

If we are designing the ideal Wisconsin, what would it look like?

As League members, after we have information, and we have positions that we believe in, we try to find appropriate venues for action.

April brings us the Legislative Breakfast, and some elections. I hope we can have some good discussions on the issues at hand, and in the election season to come. The qualities of a good discussion have been noticeably missing during the November elections and not evident recently in some political encounters. We should be given a real idea of what a candidate stands for and intends to do. In a good debate, there is a plan and an attempt to show how it would be implemented. And how it will fix a problem. What we may be seeing is plans being put in place to fix problems that don't exist. Voter I.D. is one such issue. One does not remove an arm to fix a weight problem. A change that is not well thought out can cause very big unintended consequences.

We should expect each side to listen respectfully and not do *ad hominem* attacks. We should expect that anyone willing to become a leader would not fear for their safety nor that of their family. Our society is in need of real leaders. Many of us would not make such a sacrifice – to involve our family or ourselves for the nastiness that sometimes seems a part of the current scene.

It should also be possible for any of us to be leaders in this democracy. It should not be a matter of wealth to gain an elected position. We need the ethical, the experienced, the dreamers, the brilliant and the practical. We must make it possible for honorable people to lead.

### Legislative Breakfast



Saturday, April 2<sup>nd</sup>

9:00 a.m.

Days Inn Conference Center

101 Sky Harbour Drive, La Crosse

Please R.S.V.P. by March 30th

[nfhill@centurytel.net](mailto:nfhill@centurytel.net)

or 608-782-1753

**April Lunch and Learn**  
**Diagnosing and Prescribing Watershed Health**

April 12, 2011

Radisson

Lunch 11:30- Program 12:00-1:00

It's April and an opportunity to get away from other things and think of spring, Earth Day, and environmental issues! Rich Biske is the Southeast MN Conservation Coordinator for the Nature Conservancy. He coordinates the Conservancy's work in the Root



River watershed. The Conservancy works with partners to assess watershed health and implement conservation practices. Join Rich and LWV members and friends to learn of work that is being done,

and work that is needed for the health of our streams and rivers. For lunch reservations, please contact Carolyn Mahlum-Jenkins at [cgjenks@earthlink.net](mailto:cgjenks@earthlink.net) or 608-782-5727 by April 7.

**In case you missed it!**

a report from our March 8<sup>th</sup> program by Nancy Hill

Options Clinic: History of Family Planning  
in the Coulee Region

Janet Kusch presented a history of family planning with a very remarkable 20 minute video. There were some wonderful additions to the presentation. As one looked around the room, you knew there were the pioneers in this effort sitting among us. And with not much imagination, while looking in the same room, you knew there were stories told and untold about women coming to understand that their bodies are their own.

Marian Ramlow recalled the early days of family planning in an upstairs office near the Rivoli. It was transformed to a pleasant place, thanks to volunteer efforts painting and donating furniture.

Janet mentioned that the idea of a history came late... and that the good work of Margaret Larson with her histories of women of the Coulee Region inspired further history into Family Planning in the Coulee Region. Margaret reviewed Options Clinic archives, planned and conducted all the interviews and along with Gundersen Lutheran Medical media's Jay

Choutka created the DVD. There were many people included in the video that I had no idea had played such a role. The interviews with some of the founders, Dr. Jerome Gundersen, Sally Schaldach Salisbury, Marian Ramlow, Peg Fish, A.B.Culver and Edie Williams Woods were inspirational. It appears that the political fight is never over. We need them to continue the effort, and we need to see the video and pick up the challenge, too.

As fascinating as the history is, the current situation is difficult. At the national level, the House zeroed out Title 10. At the state level, Badger Care under the Department of Health Services is now under a secretary appointed by the governor. A significant portion of Options Clinic clients receive care under Badger Care. The governor has zeroed out maternal child health money for State funded family planning clinics serving the more rural parts of Wisconsin. It's a situation that needs watching, as it seems to change daily.

Currently, the outreach alone, of the Options Clinic, is impressive. The Community Education component reaches nearly 7000 people in 250-300 presentations. Among the groups helped are Coulee Council on Addictions, Justice Sanctions, and other at risk populations as well as serving the schools in the Coulee Region. All of this is helping people plan their lives so they can reach personal, educational and career goals. Currently community educator Karolee Behringer provides information enabling people to have positive relationships, learn to communicate, make decisions based on comprehensive information on birth control and sexually transmitted infections empowering men and women to control their own health care.

We thank Janet Kusch, who has worked since 1996 to the present, for all that she and her colleagues have done.

Legislative Liaison for the Madison Metropolitan School District for six years. He also worked as a newspaper reporter and legislative aide. Mike is a graduate of the University of Wisconsin-Madison, with degrees in journalism and political science. He also served in the Peace Corps in the West African country of Mali.

Join Mike, other League members and guests to learn how we make people matter more than money in politics.

Please contact Nancy Hill for reservations at [nfhill@centurytel.net](mailto:nfhill@centurytel.net) or 782-1753 by Friday, March 7. Lunch is \$10. Although reservations are appreciated, the Waterfront will attempt to accommodate additional members, visitors and guests without reservations. The program and lunch are open to the community.

### ***Follow The Money***

**Speaker: Mike McCabe**

Lunch and Learn

Tuesday, May 11, 11:30-1:00

Waterfront Restaurant Banquet Room



Mike McCabe, Executive Director of the Wisconsin Democracy Campaign will talk about the influence of money on state lawmaking and also on the judiciary. The Wisconsin Democracy Campaign is a nonpartisan watchdog group that tracks the money in state politics and works for reforms that give ordinary citizens a stronger voice in government. Before joining the Democracy Campaign's staff in 1999, Mike was the Communications Director and

*Pictures from the past few months....*



**Dan Kapanke at the Legislative Breakfast**



**Ellen Rosborough and friends at April Lunch & Learn**



**John Medinger for Senator Kohl at the Legislative Breakfast**

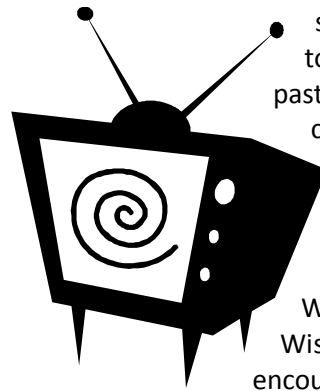
## Check it Out!

### **WisconsinEye focuses on women in public life with new broadcast series**

From tribal leaders to police officers to government officials, the rich variety of roles and experiences of women in Wisconsin public life serves as the basis for a new WisconsinEye series set to debut April 30.

With the new series called "The Difference: Women in Public Life," WisconsinEye, the statewide public affairs network broadcasting on cable television and the Internet, will focus on women in public service. The

yearlong series is sponsored by Wisconsin Women in Government.



"Wisconsin women have made lasting contributions to society. Our goal in this series is to look at women in public service past and present and the special challenges and opportunities they face as women in what traditionally has been a man's place," said Chris Long, president and CEO of WisconsinEye. "As part of WisconsinEye's mission to encourage participation in civic life, we believe this is a valuable aspect of Wisconsin public life to explore."

The series of 12 monthly half-hour programs will launch on Friday, April 30, at 8 p.m. The programs will be hosted by Stacy Forster, a former Milwaukee Journal Sentinel Capitol reporter. Claudia Looze, an Emmy-award winning producer and program manager for WisconsinEye, is executive producer.

"We're excited about the opportunity to share these stories and shed light on women's civic involvement in our state for more than a century," Looze said. "Women may bring a different perspective to issues than men. It is clear there have been barriers and challenges for women, but once they break through those barriers, what is the difference women bring to civic life? That's what we want to explore with this new series."

The series will feature women active in government and engaged in civic life and public service at all levels as well as historical segments developed with archival material from the Wisconsin Historical Society. Roundtable discussions will bring together women and men from across the state and from various perspectives to explore the different ways men and women may look at public service and key issues. Each show will close with straightforward advice from successful women in public life.

The first program will feature Lt. Gov. Barbara Lawton, the first woman in Wisconsin elected to that office, from which she has championed causes ranging from education to small business development. The series will regularly air on Mondays and Fridays at 8 p.m. and Sunday at 10 a.m. WisconsinEye broadcasts on Charter Cable Channel 995 and via the Internet at

[www.wiseye.org](http://www.wiseye.org). All programs will be archived at the website for on-demand viewing.

For more information, visit [www.wiseye.org](http://www.wiseye.org).

## Women's History at Fort McCoy

March was Women's History Month, and the LWV was invited to present a women's history program at Ft. McCoy. The league board voted to ask AAUW to participate with them on the presentation. Nancy Hill, Marilyn Hempstead, Erica Koonmen(AAUW) and Betty Kruck developed the presentation. They learned a lot and had a lot of fun in the process. Plus, the LWV and AAUW will receive payment for the presentation!

Included in the program were highlights of events during the 131 years between the adoption of the Constitution of the U.S. and the passage of the 19th Amendment, major successes for women and current women's rights issues that remain and require continued courageous work. Some history of the LWV, AAUW and other women's organization and the role they had and continue to have in enacting change was incorporated. Nancy supplied a quick funny video of *Women Know Your Place*; Marilyn supplied pictures to accompany our text for a Power Point presentation, and Erica created charts, a diagram and timeline to illustrate information.



### Financial Report

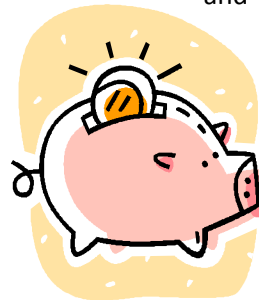
By Maureen Kinney

We received many nice donations from our members in this past finance drive. The members who generously helped us out are the following:

Maureen Freedland  
Signe Schroeder  
Elizabeth Wing  
Tara Johnson  
Shirley Haas  
Nancy Goode

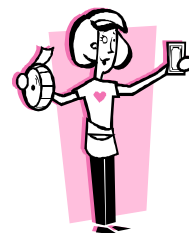
Madeline Kepner  
Marilyn McElligott  
Rebecca Naugler  
Marian Ramlow  
Pam Thiel  
Maureen Kinney  
Barb Frank  
Gretchen Benjamin  
Anita Evans  
Bev Mach  
Tara Johnson  
Kay Adams  
May Lou Ryan  
Ellen Rosborough

We also received a number of contributions from non-members Monta Clark, Ramona Gonzalez, Pam Strauss and The Coulee Bank. Unfortunately tough economic times coupled with the merger or dissolution of some area businesses has left us with less support in the local business community than in years past.



New fundraising ideas are always welcome. Please contact Maureen Kinney if you have suggestions or would like to help.

### QUILT RAFFLE



#### Heirloom-Quality Handmade Quilt

**Gretchen Benjamin, La Crosse League Board member, and accomplished quilter, is making a beautiful queen-size quilt for us to raffle off to defray costs of our state convention. She is making it of neutral-**

colored batik with purple accents. No doubt it will be fabulous.

We have applied for a raffle license and plan to have tickets available at our local annual meeting on May 24. The quilt will also be displayed at the Friday night EcoPark soirée for the State League on June 18. A winner will be drawn on June 19. You will not have to be present to win.

We have seen her lovely work, and know that this is something generations will treasure!

*Current League of Women Voters of La Crosse Area Board:*

Nancy Hill, President (09-11)  
Jane Klecamp, Vice President (09-11)  
Dea Peacock, Treasurer (08-10)  
Sandy Secrest, Secretary (08-10)  
Roxanne Reynolds, Director (08-10)  
Carolyn Mahlum-Jenkins, Director (08-10)  
Maureen Kinney, Director (08-10)  
Betty Kruk, Director (09-11)

See the legislative activities section of [www.lwwwi.org](http://www.lwwwi.org) for information on the state issues.

### Contact Info for National Issues

League of Women Voters <http://www.lwv.org/>

Library of Congress site <http://thomas.loc.gov/>

Senate <http://feingold.senate.gov/>

<http://kohl.senate.gov/>

House of Representatives

<http://www.kind.house.gov/index.html>

Supreme Court <http://www.supremecourtus.gov/>

### Contact Info for State Issues

League of Women Voters of Wisconsin

<http://www.lwwwi.org/>

Governor's Office <http://www.wisgov.state.wi.us/>

Government Accountability Board

<http://elections.state.wi.us/>

Court System <http://www.wicourts.gov/>

Senate:

<http://www.legis.state.wi.us/senhome.htm>

- District 31 Senator Kathleen Vinehout, 608-266-8546 or 877-763-6636, [Sen.Vinehout@wisconsin.gov](mailto:Sen.Vinehout@wisconsin.gov)
- District 32 Senator Dan Kapanke, 608-266-5490 or 800-385-3385; [Sen.Kapanke@legis.wisconsin.gov](mailto:Sen.Kapanke@legis.wisconsin.gov)

Assembly:

<http://www.legis.state.wi.us/asmhome.htm>

- District 91 Rep. Chris Danou, 608-266-7015 or 888-534-0091, [Rep.Danou@legis.wisconsin.gov](mailto:Rep.Danou@legis.wisconsin.gov)
- District 92 Rep Mark Radcliffe, 608-266-7461 or 888-534-0092, [Rep.Radcliffe@wisconsin.gov](mailto:Rep.Radcliffe@wisconsin.gov)
- District 93 Rep. Jeff Smith, 608-266-0660 or 888-534-0093, [Rep.Smith@wisconsin.gov](mailto:Rep.Smith@wisconsin.gov)
- District 94: Rep. Michael Huebsch, 608-266-0631 or 888-534-0094, [Rep.Huebsch@legis.wisconsin.gov](mailto:Rep.Huebsch@legis.wisconsin.gov)
- District 95: Rep Jennifer Shilling, 608-266-5780 or 888-534-0095, [Rep.Shilling@legis.wisconsin.gov](mailto:Rep.Shilling@legis.wisconsin.gov)
- District 96: Rep. Lee Nerrison, 608-266-3534 or 888-534-0096, [Rep.Nerrison@wisconsin.gov](mailto:Rep.Nerrison@wisconsin.gov)



---

## Local contact information

League of Women Voters of the La Crosse Area <http://www.lwvlacrosse.org/>

La Crosse County: Staff <http://www.co.la-crosse.wi.us/directory.htm> County Board <http://www.co.la-crosse.wi.us/CoDirctry/2SupervDist.pdf>

City of La Crosse Staff <http://www.cityoflacrosse.org/index.aspx?nid=94> Council <http://www.cityoflacrosse.org/index.aspx?NID=338>

For neighboring counties, check websites [[Buffalo](#), [Crawford](#), [Eau Claire](#), [Jackson](#), [Monroe](#), [Pepin](#), [Pierce](#), [Trempeleau](#), [Vernon](#) Counties]

***Note that the website addresses are linked in the electronic version of this document – available on our website.***

# Calendar for May - June 2010

## League of Women Voters La Crosse Area

***Follow The Money***

Riverside Center North, Waterfront's Banquet Room, 332 Front Street S.

May 11, 11:30 am – 1:00 pm

***LWV La Crosse Annual Meeting***

Riverside Center South, Cargill Room, 332 Front Street S.

May 24, 5:30 p.m.

***LWV US Annual Meeting***

Atlanta

June 11-15

***LWV WI Annual Meeting***

La Crosse

June 18-19



LEAGUE OF WOMEN VOTERS®  
OF THE LA CROSSE AREA  
P.O. BOX 363, LA CROSSE, WI 54602-0363